

# DM Cu

DM Cu is a 99.9 % commercially pure copper quality for use with Digital Metal's proprietary metal binder jetting system.

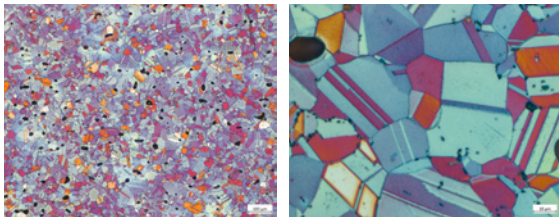
The excellent electrical and thermal conductivity properties of pure copper make it ideal for a wide range of applications. It is mostly used for electronics, heat exchangers, heat sinks, engine parts as well as in a variety of industry applications that require good conductivity. Printing in copper offers freedom of design and enables optimal functionality with few restrictions.

## PHYSICAL PROPERTIES - TYPICAL VALUES

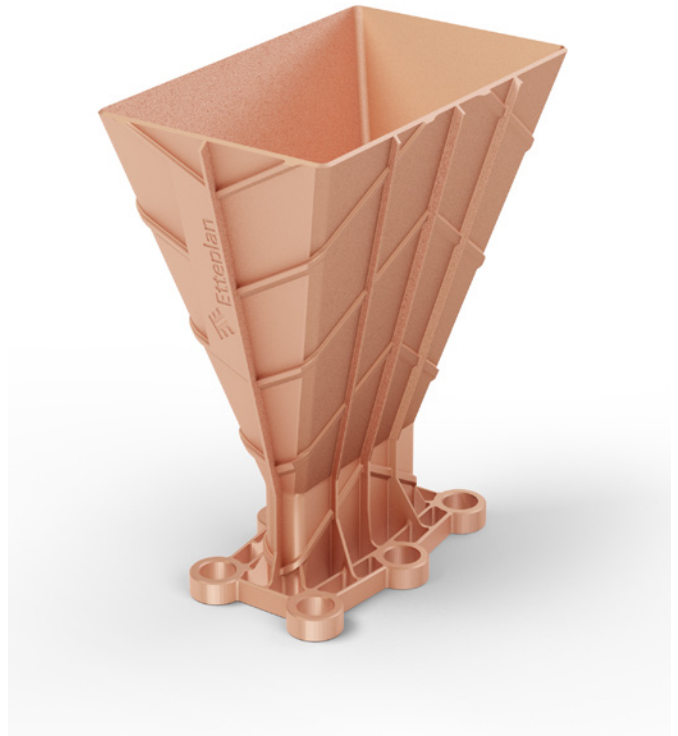
	Typical DM Cu
Ultimate tensile strength (MPa)	195
Yield strength (MPa)	30
Elongation (%)	35
Sintered density (g/cm <sup>3</sup> )	8.6

## COMPOSITION - TYPICAL VALUES

Composition (% weight)	Typical DM Cu
Cu	99.9
Fe	0.04
Ni	0.015
C	0.02
O	0.003
Others	Balance



LOM images: DM Cu etched with Klemm's reagent plus polarized light



## FEATURES

- 99.9 % pure copper
- Excellent thermal and electrical conductivity
- Suitable for a variety of industry applications
- Commonly used for heat sinks, heat exchangers, engine parts and electronics

## TENSILE TEST BEHAVIOUR OF DM CU

